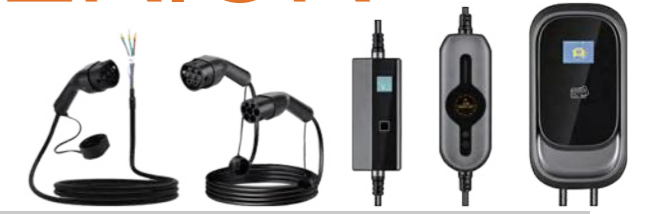


CONNECT U AND I

GLOBAL SUPERIOR SUPPLIER



**One-Stop
Electric Vehicle Auto Parts and EV Charge Components
Manufacturer**



Love for Family Love for the Mission Love for the Planet





01

Portable EV Charger

02

Portable Charger Mode2 Pro

03

Type 2 IEC 62196 Charging Cable

04

AC Wall-mounted Charger

05

Public DC Fast EV Charger

06

DC Fast Charger

07

360kw/400kw Public
DC Quick Charger

AUPINS A5 Series

Portable EV Charger

Tailored for Global Markets / Market Compatibility

The AUPINS A5 Series Portable EV Charger is a premium charging solution designed for global EV users. Supporting all Type 1 (SAE J1772), Type 2 (IEC 62196), Tesla NACS, GBT connectors, and available in multiple power levels up to 7kW, this portable charger meets the diverse needs of drivers across Europe, North America and all over the world. With a compact, robust design and advanced safety features, it offers the perfect balance of mobility, power, and reliability.

Power Supply

1 Phase, 110V/220V/240V AC

Max Power

2.3kW / 3.5kW / 7 kW

Connector

Type 2 (IEC 62196 EU Standard), GB/T(China Standard), Tesla NACS(J3400 US standard), Type 1(J1772 US Standard)

Power Supply

AC 220V ±15%



Current

6/8/10/13/16/25/32/40A (Customization)

Plug

EU Standard (Schuko), German Standard (CEE 7/4), NEMA 14-50 etc. (Customizable per client requirements)

Cable

5m TPU/TPE

Why Choose AUPINS A5 Series Mode2 Portable EV Charger?

The AUPINS A5 Series Mode2 Portable EV Charger offers unmatched flexibility for EV owners who value performance and reliability. With both single-phase and three-phase models, this charger adapts to residential or commercial power systems. Its portable and rugged structure makes it a perfect travel companion for business users, EV fleets, and everyday drivers alike.

Whether you need high-power charging on the go or a reliable backup charger at home, the AUPINS A5 Series Mode2 Portable EV Charger delivers consistent performance that keeps you moving.

Ready When You Are

Whether you're traveling across borders or just across town, the AUPINS A5 Series Mode2 Portable EV Charger is built to follow your journey. Portable, powerful, and easy to use—it's not just a charger, it's your electric lifestyle partner.

Parameter

AUPINS A5 Series Mode2 Portable EV Charger		
Specification	Model A5	
Connector and Electrical Performance		
Input Voltage / Output Voltage	AC 220V ±15%	1.54 inches LCD Display
Input Frequency	50/60Hz	
AC Power Output Rating	2.3kW/3.5kW/ 7kW	
Output Current	6A/8A/10A/13A/16A/32A 1 phase	
Power Plug Options (Socket)	EU Standard (Schuko), German Standard (CEE 7/4), NEMA 14-50 etc. (Customizable per client requirements)	
Charging Connector Type	SAE J1772 Type1, IEC 62196-2 Type2, GB/T	
Safety Features		
Ingress Protection	IP67	
Impact Protection	IK10	
Electrical Protection	Under Voltage Protection / Over Load Protection / Short Circuit Protection / Leakage Protection / Over-temp Protection /Lightning Protection	
RCD Type	Type A / Type A+6mA DC	
Environment Temperature	-30°C~50°C	
Certifications	TUV/CE/UKCA/ETL/FCC/ROHS/PSE/RCM/CB SCHEME	
Function		
Current Adjusting	Yes	
Ethernet/WIFI/4G/Bluetooth	No	
LED Indicator Light	No	
LCD Display Screen	Yes	
Touch Button	Yes	
Time Setting	Yes	
Time Delay Setting	Yes	

AUPINS T3 Series

Portable Charger Mode2 Pro Tailored for Global Markets / Market Compatibility

The AUPINS T3 Series Portable Charger Mode2 Pro is a high-performance EV charging solution designed for drivers who prioritize efficiency, durability, and safety. Supporting all Type 1 (SAE J1772), Type 2 (IEC 62196), Tesla NACS, GBT connectors, it offers flexible power options and multiple plug types for use across homes, workplaces, and on-the-go scenarios. With rugged weatherproof construction and comprehensive safety protection, the AUPINS T3 Series Portable Charger Mode2 Pro is your ideal charging companion for any environment.

Power Supply

AC 220V ±15%, 50/60Hz

Max Power

9.6kW/11kW/22kW

Connector

Type 2 (EU Standard), GBT connector, J1772 Type 1, NACS Connector

Waterproof Rating

IP66



Current

6/8/10/13/16/25/32/40A (Supports 32A / 40A in customized versions)

Plug

CEE, NEMA 14-50 (customizable per region)

Cable

5m TPU/TPE industrial-grade cable

Impact Protection

IK10

Why Choose AUPINS T3 Series Portable Charger Mode2 Pro?

Whether you're at home, in the office, or on the road, the AUPINS T3 Series Portable Charger Mode2 Pro ensures fast, safe, and reliable EV charging. Built with premium materials and cutting-edge safety mechanisms, it's designed to last over 10,000 uses. Its universal compatibility and customizable design make it ideal for individual users, EV fleets, and distributors looking for high-value portable charging solutions.

Ready When You Are

No matter where your journey takes you—from daily commutes to cross-country adventures—AUPINS T3 Series Portable Charger Mode2 Pro is ready to power up your drive. Compact, powerful, and built to perform—it's more than a charger, it's your essential electric driving companion.

Parameter

AUPINS T3 Series Mode2 Portable EV Charger		
Specification	Model T3	
Connector and Electrical Performance		
Input Voltage / Output Voltage	380~450V AC	1.8" LCD Round Shape Color Screen
Input Frequency	50/60Hz	
AC Power Output Rating	9.6kW/11kW/22kW	
Output Current	6/8/10/13/16/25/32/40A (Customizable)	
Power Plug Options (Socket)	CEE, NEMA 14-50 (customizable per region)	
Charging Connector Type	Type 2 (EU Standard),GBT connector, J1772 Type 1, NACS Connector	
Safety Features		
Ingress Protection	IP66	
Impact Protection	IK10	
Electrical Protection	Over/Under voltage protection, Surge protection, Over temperature protection Leakage Protection, Lightning, Over current protection	
RCD Type	Type A 30mA AC + 6mA DC	
Environment Temperature	-30°C~50°C	
Certifications	CE, RoHS,TUV, FCC, CB	
Function		
Current Adjusting	Yes	
Ethernet/WIFI/4G/Bluetooth	Yes	
LED Indicator Light	Yes	
LCD Display Screen	Yes	
Touch Button	Yes	
Time Setting	Yes	
Time Delay Setting	Yes	

AUPINS S Series

Type 2 IEC 62196 Charging Cable Tailored for Global Markets / Market Compatibility

The AUPINS S Series Type 2 IEC 62196 Charging Cable is a robust AC EV charging solution designed for Global Market. It is certified with CE, ROHS, UKCA in accordance with IEC 62196-2 standard, supporting 16A/32A current and up to 3.5kW/7kW/11kW/ 22kW power output, it offers reliable charging for residential, public, and commercial stations across Europe and other Type 2-standard regions. Built with flame-retardant materials and a weather-resistant TPU cable, it ensures safe, efficient, and durable performance in all conditions.

Input Voltage

220V single phase /
440V AC three-phase

Maximum Power

Up to 3.5kW/7kW/11kW/22kW
(400V × 32A)

Output Current

16A / 20A / 32A (depending on
model)

Working Temperature

-30°C to +50°C



Input Frequency

50Hz / 60Hz

Output Voltage

220V/400V AC

Applicable Scenarios

Residential, commercial, and
workplace EV charging stations
using the IEC 62196-2 Type 2
interface; compatible with
European and other Type 2
standard markets

Protection Level

IP55, impact-resistant TPU insulation

Why Choose AUPINS S Series Type 2 IEC 62196 Charging Cable?

The AUPINS S Series Type 2 IEC 62196 Charging Cable is a high-performance EV charging solution designed for fast, safe, and reliable charging of electric vehicles across Europe and regions adopting the IEC 62196-2 standard. Supporting up to 32A and 22kW, this Type 2 charging cable delivers efficient AC charging for residential, commercial, and public use. Built with premium copper wiring, flame-retardant insulation, and an IP55-rated durable shell, the cable ensures excellent heat resistance, weatherproofing, and long-lasting performance. With CE, TUV, and RoHS certifications, the AUPINS S Series Type 2 IEC 62196 Charging Cable guarantees safety, compatibility, and peace of mind. Whether you need a dependable home EV charger or a portable cable for travel, this robust and user-friendly AUPINS S Series Type 2 IEC 62196 Charging Cable is the ideal choice for modern electric vehicle owners.

Parameter

AUPINS S Series Type2 IEC 62196 Charging Cable	
Specification	S (Speed) Series
Item	Details
Standard	IEC 62196-2 (Type 2 - Type 2)(Type 2-open end)
Rated Current	16A / 32A
Rated Voltage	250V (Single Phase) / 480V (Three Phase)
Certificate	TUV, CE, UKCA,CB
Cable Structure	16A Single Phase: 3×2.5mm ² + 2×0.5mm ²
	32A Single Phase: 3×6mm ² + 2×0.5mm ²
	16A Three Phase: 5×2.5mm ² + 2×0.5mm ²
	32A Three Phase: 5×6mm ² + 2×0.5mm ²
Cable Insulation	XLPO (Cross-linked Polyolefin)
Sheath Material	TPU (Thermoplastic Polyurethane)
Connector Housing	PC + PBT Alloy
Contact Material	Copper Alloy, Silver-Plated
Sealing Material	Silicone Rubber
Cable Form	Straight, Spiral Type
Protection Level	IP55, IK08
Customization Options	Cable Length: Yes
	Cable Color: Yes
	Plug Color: Yes
	Logo Printing: Yes
Mechanical Life	10,000 Mating Cycles (No-load Plug)
Insertion Force	<100N
Contact Resistance	≤0.5 mΩ
Insulation Resistance	>1000MΩ (DC 500V)
Withstand Voltage	2500V AC
Temperature Rise of Pins	<50K
Operating Temperature	-30°C to +50°C
Impact Resistance	1m Drop Test + 2T Vehicle Overrun
Flame Retardant Grade	UL94 V-0

AUPINS C5 Series

AC Wall-mounted Charger

Tailored for Global Markets / Market Compatibility

The AUPINS C5 Series AC Wall-mounted Charger is a high-performance, one-phase and three-phase EV charging solution designed for the European market, US market, Brazil market, and all over global market. Compliant with IEC 61851-1:2017 and tested in accordance with IEC 62311:2020, EN 300328 V2.2.2:2019, EN 300330 V2.1.1:2017, EN 301489-1 V2.2.3:2019, EN 301489-3 V2.3.2:2023, EN 301489-17 V3.2.4:2020, EN IEC 61000-6-1:2019, EN IEC 61000-6-3:2021, EN IEC 61851-21-2:2021, EN IEC 61851-1:2019, BS EN IEC 61000-6-1:2019, BS EN IEC 61000-6-3:2021, BS EN IEC 61851-21-2:2021, and BS EN IEC 61851-1, available in 7kW, 11kW, and 22kW versions, it features a compact wall-mounted design, robust IP55 protection, and a user-friendly 2.4-inch screen interface. Built-in safety mechanisms include overvoltage, overcurrent, and leakage protection. With flexible current adjustment and RFID activation, the AUPINS C5 Series AC Wall-mounted Charger is ideal for residential, workplace, and commercial charging environments.

Input Voltage

AC 230V / AC 400V

Maximum Power

7kW / 11kW / 22kW

Output Current

16A / 32A(based on model)

Working Humidity

5% – 95%, non-condensing



Input Frequency

50Hz

Output Voltage

AC 230V / AC 400V

Applicable Scenarios

Home charging, Public Parking, Commercial charging

Working Temperature

-30°C to +50°C

Why Choose The AUPINS C5 Series AC Wall-mounted Charger?

The AUPINS C5 Series AC Wall-mounted Charger delivers reliable 7kW/11kW/22kW EV charging for home, workplace, and commercial use. It features IP55 protection, RFID control, and built-in safety functions. Certified to TUV, CB, CE, UKCA, RCM, TR25, RED, FCC, RoHS, REACH, etc., it's a smart and durable choice for Type 2, GBT, SAE J1772 Type 1, and NACS J3400 EV charging.

Parameter

AUPINS C5 Series AC Wall-mounted charger		
Specification	Model C5	
Connector and Electrical Performance		
Input Voltage / Output Voltage	110~250V / 380~450V AC±15%	2.4-inch LCD Color Screen
Input Frequency	50 / 60Hz	
AC Power Output Rating	7kW / 11kW / 22kW	
Output Current	16A / 32A/50A	
Power Plug Options (Socket)	N/A	
Charging Connector Type	Type1/Type2/ Tesla/GBT + 5M charging cable	
Safety Features		
Ingress Protection	IP55	
Impact Protection	N/A	
Electrical Protection	Over/Under voltage protection, Surge protection, Over temperature protection, Leakage Protection, Lighting Protection, Over current protection	
RCD Type	Type A AC 30mA + DC 6mA	
Environment Temperature	-30°C to +50°C	
Certifications	TUV, CB, CE, UKCA, RCM, TR25, RED, FCC, RoHS, REACH, etc.	
Function		
Current Adjusting	Yes	
Ethernet/WIFI/4G/Bluetooth	Yes	
LED Indicator Light	Yes	
LCD Display Screen	Yes	
Touch Button	Yes	
Time Setting	Yes	
Time Delay Setting	Yes	

AUPINS EF040 Series

Public DC Fast EV Charger Tailored for Global Markets / Market Compatibility

The AUPINS EF040 Series Public DC Fast EV Charger is a robust and high-efficiency Mode 4 DC charging solution, designed to be installed in both public locations (urban spaces, shopping centers, airports and etc.) and commercial areas (companies, shopping malls). Available in both wall-mounted and pedestal installation formats, it supports dual charging standards—CCS Combo-2 and CHAdeMO—making it compatible with a wide range of electric vehicles up to 40kW. With a compact footprint, smart user interface, and multiple safety protections, the AUPINS EF040 Series Public DC Fast EV Charger ensures fast, reliable, and secure charging experiences in any environment. After user identification (with RFID, credit card or Mobile APP), by simply coupling the charger's output plug to the EVs, you will have a secured and fast charging process. The charging battery status is displayed and the charging process can be terminated by various user commands.

Input Voltage

400Vac +/-10%, 50/60Hz,
3-phase + neutral + PE

Maximum Power

40kW (single gun), 2x20kW
(dual simultaneous charging)

Output Current

CCS: up to 125A (single),
2x66.7A (dual);
CHAdeMO: up to 125A (single),
2x66.7A (dual)

Working Humidity

5% – 95% (non-condensing)



Input Frequency

50Hz / 60Hz

Output Voltage

CCS: 200–1000V DC,
CHAdeMO: 200–500V DC

Applicable Scenarios

Public parking, commercial fleet
stations, highway service areas

Working Temperature

-25°C to +50°C (derating from 50°C
to 75°C)

Why Choose AUPINS EF040 Series Public DC Fast EV Charger?

The AUPINS EF040 Series Public DC Fast EV Charger is an ideal solution for municipalities, service operators, and EV infrastructure developers who demand versatility, performance, and user-friendliness. Its dual-standard output, multilingual interface, and flexible deployment options make it suitable for global applications. Designed with safety and durability at its core, the AUPINS EF040 Series Public DC Fast EV Charger delivers dependable fast charging to keep electric mobility moving forward.

Parameter

AUPINS EF040 Series Public DC Fast EV Charger	
System	
Charging type	Mode 4
Dimension (H x W x D)	600 x 700 x 363mm, 1600 x 700 x 363mm (pedestal mount)
Enclosure protection grade	IP54, IK10
Cable routing	Bottom inlet and outlet wiring
Net weight	125kgs, 145kgs (pedestal mount)
Charging standard	IEC 61851-23, CHAdeMO
Certificate	DEKRA certified CE, EN 61851-23:2014 + EN 61851-23:2014/AC:2016-06, EN61851-1:2011
Protection	Over/under voltage protection, overload protection, current leakage protection, grounding protection, lightning surge protection
Accessories	Connector holder, wall-mounting bracket, ground-mounting pedestal
User interface	
User authentication	RFID, Nayax credit card (optional), Mobile APP
Display	7" LCD touch screen
Support languages	English, Italian, Czech, Polish, Russian, Spanish, Romanian, Thai, German, French, Dutch (other languages upon request)
Network interface	Ethernet, GPRS and LTE (optional)
Protocol	OCPP 1.6J (WS & WSS encryption), future upgradable to 2.0
Environmental	
Working temperature	-25°C – +50°C, derating from 50°C to 75°C
Working humidity	5% – 95% non-condensation
Altitude	<2000m
Cooling	Fan cooling
Input	
Input voltage	400Vac +/-10%, 50/60Hz, 3-phase + neutral + PE
Max. input current	65A
Power factor	0.99 at nominal output
Efficiency	94% at nominal output
Output	
Max. DC output power (single charging)	1.CCS: 40kW CHAdeMO: 40kW 2.CCS: 40kW
Max. DC output power (simultaneous charging)	1.CCS: 20kW CHAdeMO: 20kW 2.CCS (1): 20kW CCS (2): 20kW
DC output voltage range	1.CCS: 200 – 1000VDC CHAdeMO: 200 – 500VDC 2.CCS: 200 – 1000VDC
DC output current range (single charging)	1.CCS: 0 – 125A CHAdeMO: 0 – 125A 2.CCS (1): 0 – 66.7A CCS (2): 0 – 66.7A
DC output current range (simultaneous charging)	1.CCS: 0 – 66.7A CHAdeMO: 0 – 66.7A 2.CCS (1): 0 – 66.7A CCS (2): 0 – 66.7A
Number of plugs	2
Outlet connectors	CCS Combo-2 CHAdeMO JEVs G105 CCS Combo-2

AUPINS EF160 Series

DC Fast Charger Tailored for Global Markets / Market Compatibility

The AUPINS EF160 Series DC Fast Charger is a high-power, floor-mounted EV charger designed for public and commercial charging networks. Offering output power from 60kW to 240kW, it supports GB/T, CCS1, CCS2, and CHAdeMO standards, ensuring broad compatibility with electric vehicles worldwide. It can be used to charge all kinds EVs with CCS-2 and CHAdeMO and AC Type-2 fast charging standard with up to 172kW (150kW DC and 22kW AC). It also support dual charging cable with up to 240kW fast Charging. With advanced safety features, RFID authentication, and a 7-inch touchscreen interface, it provides an efficient, reliable, and user-friendly charging experience. Its IP55-rated enclosure and -30°C to +50°C operating range make it ideal for outdoor use in various climates. After user identification via RFID, credit card, or mobile app, charging begins by simply connecting the output plug to the EV. The system supports single DC, dual DC, or combined DC and AC outputs. Battery status and charging progress are clearly shown on the screen, and users can stop charging at any time using available commands.

Input Voltage

400VAC ±10%,
3-phase + neutral + PE

Maximum Power

240kW (configurable: 60kW / 120kW / 150kW / 180kW / 240kW)

Output Current

Max 250A (or up to 400A optional, depending on connector and model)

Working Humidity

5% – 95% RH, non-condensing



Input Frequency

50Hz / 60Hz

Output Voltage

Range DC 200V – 750V
(Optional: up to 1000V)

Applicable Scenarios

Public Fast Charging Stations,
Highway Service Areas,
Commercial Fleets

Working Temperature

-30°C to +55°C (derating from 55°C to 75°C)

Parameter

AUPINS EF160 Series 60kW/90kW/150kW/180kW/240kW DC Fast Charger			
System			
Charging type	Mode 4, 60kW (2*30kW charging modules) /150kW (5*30kW charging modules)/180kW (6*30kW charging modules) / , 240kW (6*40kW charging modules)		
Dimension (H x W x D)	1900 x 725 x 700mm	Enclosure protection grade	IP54, IK10
Cable routing	Bottom inlet, top outlet wiring	Net weight	425kgs(180kW) / 460kgs (240kW)
Charging standard	IEC 61851-1, IEC 61851-23, CHAdeMO		
Certificate	DEKRA certified CE, EN 61851-23:2014 + EN 61851-23:2014/AC:2016-06, IEC 61851-21-2:2018, EN IEC 61851-21-2: 2021		
Protection	Over/under voltage protection, overload protection, current leakage protection, grounding protection, lightening surge protection		
Accessories	Cable management balancer reel		
User interface			
User authentication	RFID, Nayax credit card (optional), Mobile APP		
Display	7 " LCD touch screen		
Support languages	English, Italian, Czech, Polish, Russian, Spanish, Romanian, Thai, German,French, Dutch (other languages upon request)		
Network interface	Ethernet, GPRS and LTE (optional), support manually download the charging data from the local ev charger by USB disk.		
Protocol	OCPP 1.6J (WS & WSS encryption), future upgradable to 2.0		
Environmental			
Working temperature	-30°C~+55°C, derating from 55°C to 75°C	Altitude	<2000m
Working humidity	5%-95% non-condensation	Cooling	Forced air cooling
Model type EF160CC60/EF160CC150 EF160CC180/EF160CC240			
Input			
Input voltage	400Vac +/-10%, 50/60Hz, 3-phase + neutral + PE		
Max. input current	131A 60kW /179A 90kW /228A 120kW /265A 150kW /291A 180kW / 388A 240kW		
Power factor	0.99 at nominal output	Efficiency	94% at nominal output
Output			
Max. DC output power (single charging)	CCS: 60kW /90kW/120kW/150kW/180kW/240kW CHAdeMO: 60kW		
Max. DC output power (simultaneous charging)	1.CCS2: 30kW CHAdeMO: 30kW Type2 22kW 2.CCS2: 60kW CHAdeMO: 30kW Type2 22kW 3.CCS2: 60kW CHAdeMO: 60kW Type2 22kW 4.CCS2: 90kW CHAdeMO: 60kW 5.CCS2: 90kW CCS2: 90kW 5.CCS2: 120kW CCS2: 120kW		
DC output voltage range	CCS-2: 150 – 1000VDC		
DC output current range	CCS-2: 0-250A or 0-400A (optional)		
Number of plugs	2		
Outlet connectors	CCS Combo-2, CHAdeMO, Type 2		

Why Choose AUPINS EF160 Series DC Fast Charger?

The AUPINS EF160 Series DC Fast Charger with flexible power options to suit diverse needs. Its broad compatibility with multiple charging standards ensures it works seamlessly with most electric vehicles worldwide. Designed for durability and safety, it features advanced protection systems and a rugged IP54-rated enclosure ideal for outdoor use. The user-friendly touchscreen interface makes charging simple and convenient, making it a smart choice for public and commercial charging stations.

AUPINS EF400 series

360kw/400kw Public DC Quick Charger

Tailored for Global Markets / Market Compatibility

The AUPINS EF400 Series 360kW/400kW Public DC Quick Charger offers excellent mechanical strength and environmental protection. Advanced safety features, including over-voltage, over-current, short-circuit, and over-temperature protection, ensure stable and secure operation.

Supporting OCPP 1.6J and integrated communication protocols such as CAN and RS485, the EF400 Series can be easily connected to smart charging networks. It is suitable for installation in both public locations—such as urban areas, airports, and shopping centers—and commercial environments, including business parks and fleet depots.

Compatible with all EVs using the CCS fast charging standard, it offers charging power of up to 400kW, enabling efficient and reliable DC fast charging for a wide range of electric vehicles. After user identification through RFID, credit card, or mobile app, users simply connect the charger's output plug to the EV to begin a secure and high-speed charging process.

Multiple output configurations are available, including single DC, dual DC, or even triple output (DC+AC) simultaneously. Battery status and charging progress are clearly displayed, and users may terminate the session at any time using listed commands.

Input Voltage

AC 400V ±10%,
3-phase + neutral + PE

Maximum Power

240kW / 320kW / 360kW /
400kW

Applicable Scenarios

Public fast charging stations,
commercial fleet charging,
highway rest stops, EV service
centers

Working Temperature

-30°C to +50°C



Input Frequency

50Hz / 60Hz

Output Current

Max 583A/642A

Working Humidity

5%–95% (non-condensing)

Working Altitude

≤2000m

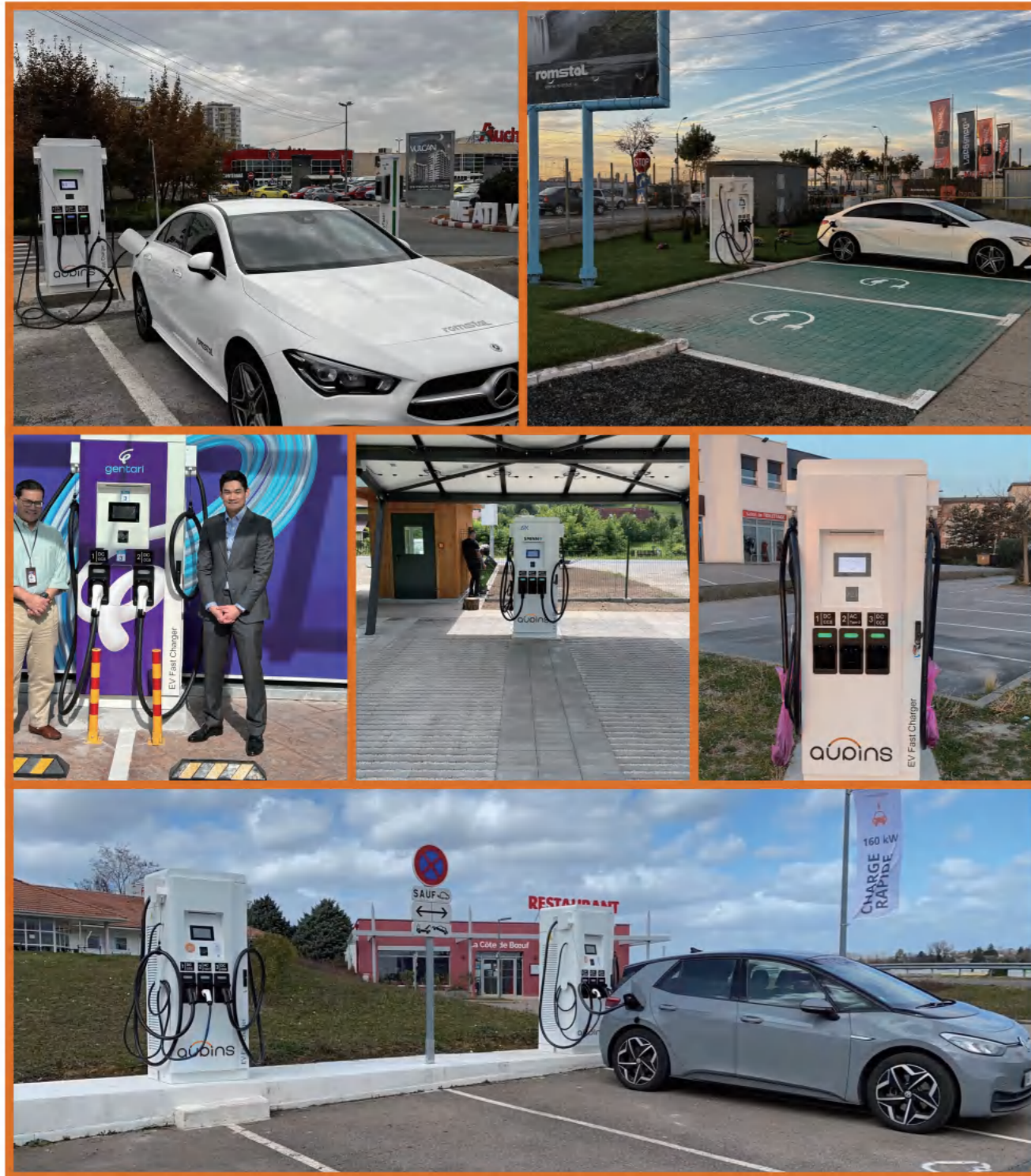
Why Choose AUPINS EF400 series 360 kW/400kw Public DC Quick Charger?

The AUPINS EF400 series 360 kW/400kw Public DC Quick Charger delivers high-efficiency, reliable fast charging suitable for a wide range of EV models and operational scenarios. Its modular design, broad compatibility, and advanced protections make it an ideal solution for public and commercial fast charging deployments. Backed by support for industry-standard communication protocols, it enables seamless integration with charging networks, helping operators deliver a superior charging experience.

Parameter

AUPINS EF400 series 240kW/320kW/360kW/400kw Public DC Quick Charger			
System			
Charging type	Mode 4, 360kW (9*40kW charging modules)/400kW (10*40kW charging modules)		
Dimension (H x W x D)	1900 x 750 x 725mm (360kw) /2070 x 1020 x 910mm (400kw)		
Enclosure protection grade	IP54, IK10	Cable routing	Bottom inlet, top outlet wiring
Net weight	545kgs (360kw) / 560kgs 400kw)	Charging standard	IEC 61851-1, IEC 61851-23, CHAdeMO
Certificate	DEKRA certified CE, EN 61851-23:2014 + EN 61851-23:2014/AC:2016-06, IEC 61851-21-2: 2018, EN IEC 61851-21-2: 2021		
Protection	Over/under voltage protection, overload protection, current leakage protection, grounding protection, lightening surge protection		
Accessories	Cable management balancer reel		
User interface			
User authentication	RFID, Nayax credit card (optional), Mobile APP		
Display	10" LCD touch screen		
Support languages	English, Italian, Czech, Polish, Russian, Spanish, Romanian, Thai, German, French, Dutch (other languages upon request)		
Network interface	Ethernet, GPRS and LTE (optional), support manually download the charging data from the local ev charger by USB disk.		
Protocol	OCPP 1.6J (WS & WSS encryption), future upgradable to 2.0		
Environmental			
Working temperature	-30°C - +55°C, derating from 55°C to 75°C	Altitude	<2000m
Working humidity	5%-95% non-condensation	Cooling	Forced air cooling
Model type EF400CC240/EF400CC320 EF400CC360/EF400CC400			
Input			
Input voltage	400Vac +/-10%, 50/60Hz, 3-phase + neutral + PE		
Max. input current	583A (360kw) / 642A (400kw)		
Power factor	0.99 at nominal output		
Efficiency	94% at nominal output (360kw) / 95% at nominal output (400kw)		
Output			
Max. DC output power (single charging)	CCS-2: 240kW/320kW/360kW/400kW		
Max. DC output power (simultaneous charging)	1.Connector 1:120kW Connector 2:120kW 2.Connector 1:160kW Connector 2:160kW 3.Connector 1:200kW Connector 2:160kW 4.Connector 1:200kW Connector 2:200kW		
DC output voltage range	CCS-2: 150-1000VDC		
DC output current range	CCS-2: 0-400A		
Number of plugs	2		
Outlet connectors	CCS Combo-2		

Cases



Cases

